

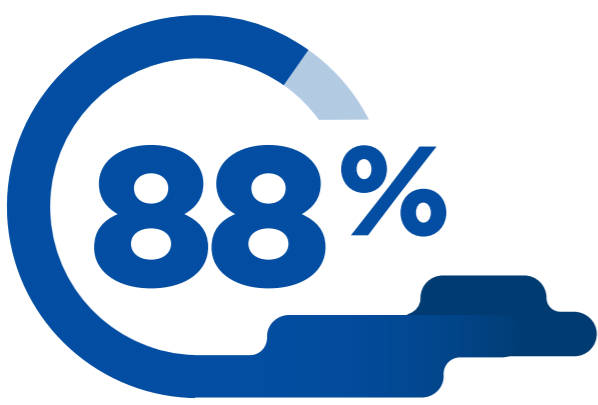
# ENTERPRISE CLOUD INDEX

A South African view of the current cloud landscape.



## ENTERPRISES ARE ADOPTING A HYBRID CLOUD MODEL ONE STEP AT A TIME

### First steps include



consider hybrid cloud the ideal operating model



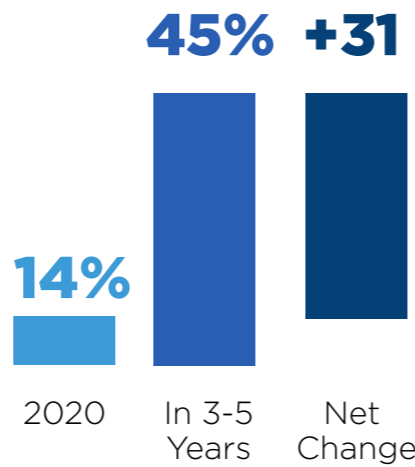
leveraging private cloud and hyperconverged infrastructure



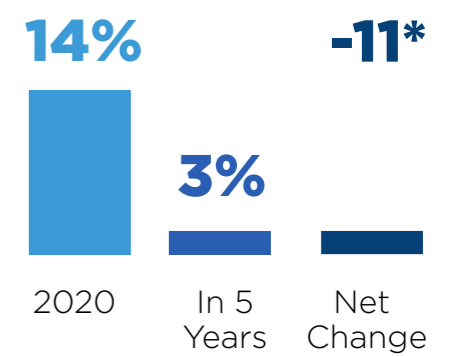
decommissioning non-cloud-enabled datacentre

## SOUTH AFRICAN IT TEAMS ARE PLANNING SUBSTANTIAL INFRASTRUCTURE CHANGES

They foresee, on average, a five-year hybrid cloud increase of **more than 31 percentage points**



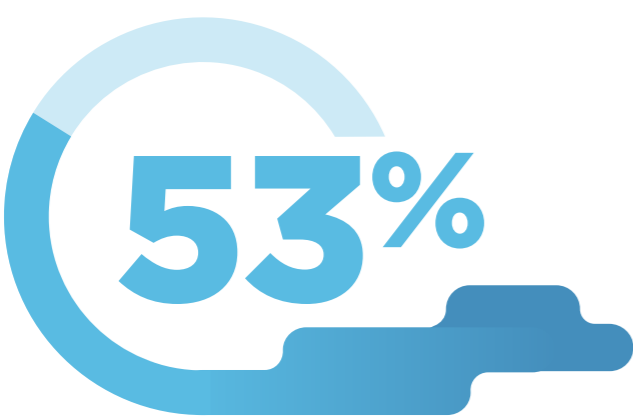
and a corresponding **11-point drop** in non-cloud-enabled datacentres



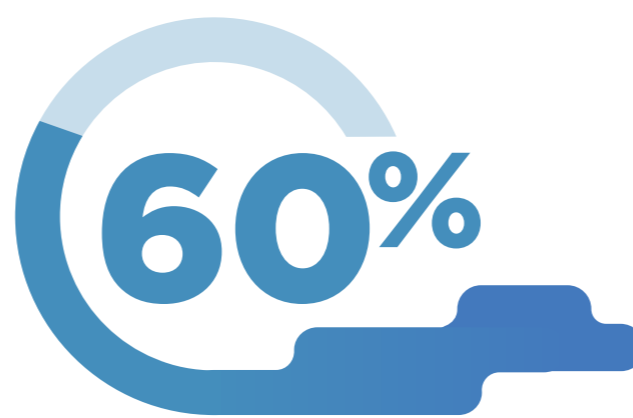
\*11 percentage point change is calculated by taking the exact percentage of those who currently use a traditional datacentre

## STRATEGIC BUSINESS OUTCOMES ARE DRIVING CHANGE MORE SO THAN ECONOMICS

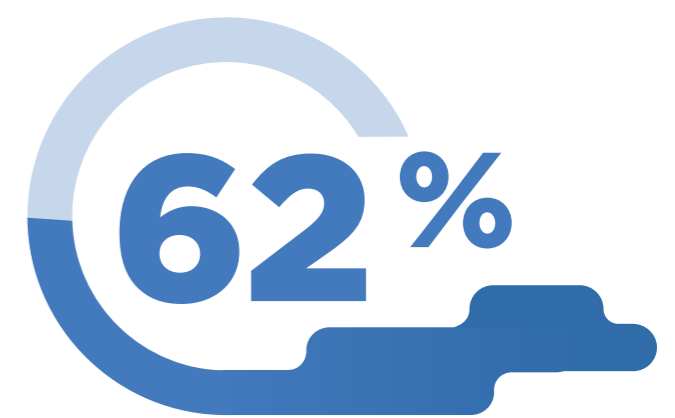
**Cutting costs is no longer a top motive for modifying IT infrastructures. South African respondents' primary concerns were**



increase speed to deliver business needs



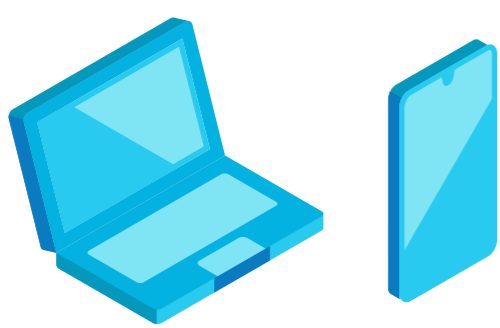
flexibility to meet dynamic business requirements



better support for customers and remote workers

## ORGANISATIONS ALREADY RUNNING HYBRID CLOUD ARE MORE FOCUSED ON STRATEGIC INITIATIVES POST-COVID

**Those businesses running hybrid environments are planning more strategic initiatives for after the pandemic, including**



implementing 5G (61%)

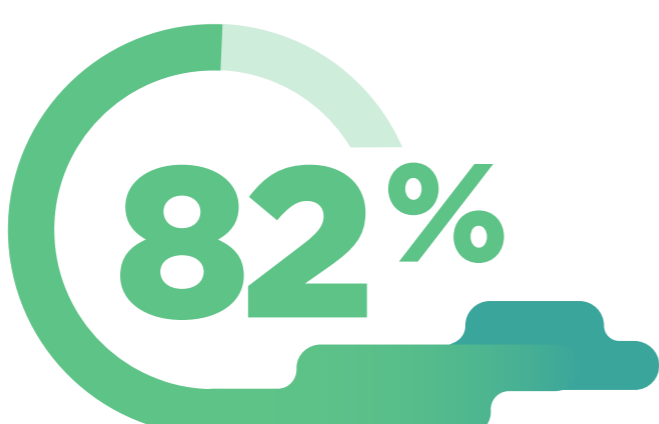


stronger business continuity plans (54%)

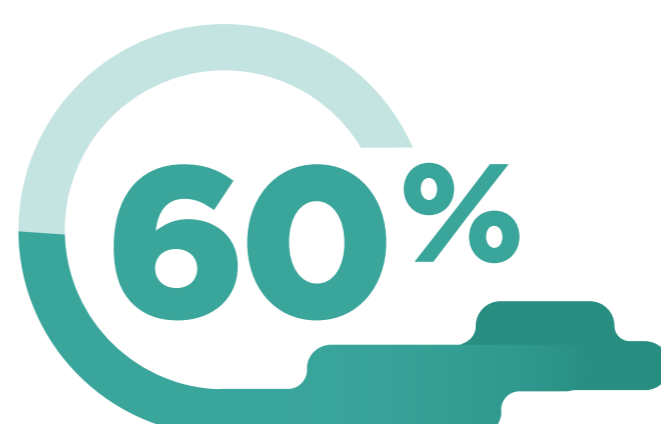


improving IT infrastructure (55%)

## THE GLOBAL PANDEMIC HAS RAISED IT'S PROFILE AND FUELED CLOUD ADOPTION



More than three-quarters of South African respondents said IT is now seen more strategically than before COVID-19



In addition, more than half of respondents said they increased their hybrid cloud investments as a direct result of the pandemic